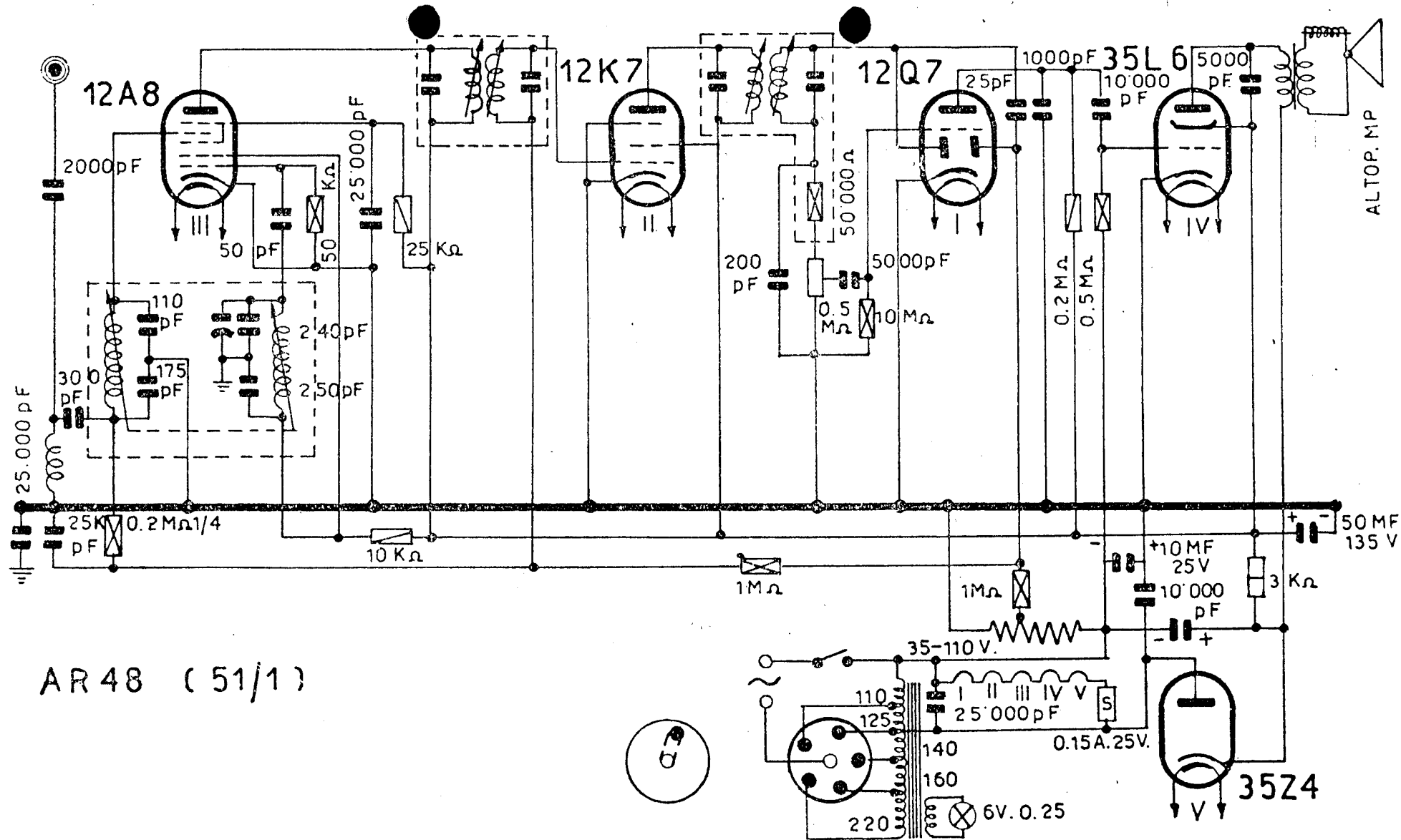


[315]

UNDA - Modd. AR 48, 51/1



AR 48 (51/1)

UNDA RADIO - Mod. AR 48 e mod. 51/1 - Ad induttore variabile onde medie. Media frequenza 450 kc/s. Tensione catodo 35Z4 137 V; placca 35L6 125 V, schermo 35L6 e 12K7, placche 12K7 e 12A8 92,5 V, schermo 12A8 42 V. Corrente anodica totale 50 mA. Consumo 30 W.

UNDA - Modd. AR 48, 51/1